



Model ESW

**SINGLE-WALL
HIGH-EFFICIENCY VENTING**

DELIVERING THE CERTAINTY
OF ECONOMICAL,
LEAK-FREE SAFETY



MODEL ESW

SINGLE-WALL HIGH-EFFICIENCY VENTING

DESIGNED TO HANDLE HIGH-EFFICIENCY VENTING TEMPERATURES IN AN ECONOMICAL, SINGLE-WALL DESIGN

Our eVent® Series is built for the unique and challenging requirements of high-efficiency appliances. Each has advanced venting technology, joint connections, is UL certified and provides safe, leak-free venting. Our single-wall ESW model is ideal in locations where heat retention is not critical.

LISTING

The Schebler eVent® Series is listed by Underwriters Laboratories Inc. (UL) under file number MH10056 in the United States and Canada for UL 1738 and ULC S636-95 vent. Model ESW, eVent® SW DualSeal®, is a single wall special stainless steel venting system for gas fired appliances listed as Category II, III, and IV with a maximum flue gas temperature of 550°F, and 40" WC positive pressure. Gas vent – BH, Class I/ Class II -245°C.

SYSTEM CONCEPT

The eVent® SW DualSeal® with RapidLock® Connection System is a modular single wall prefabricated vent and exhaust system used in venting high efficiency appliances that require a positive, neutral or negative draft exhaust. The Patent Pending joint connection system ensures a quick and leak-free connection with the industry's highest pressure rating. Connections are sealed with factory-applied gaskets and pressure tight v-bands designed specifically to handle the temperature and corrosive condensate produced by high-efficiency appliances.

ESW is a single wall product that utilizes either AL29-4C or 316L liner providing exceptional corrosive resistance meeting appliance manufacturers' warranty requirements.

COMPLETE LINE OF FITTINGS AND SIZES AVAILABLE

The Model ESW is available in even and odd diameters ranging from 5" to 48". A complete line of straight sections, variable lengths, tees, elbows, stack terminations, roof penetration components and support members are offered. In addition to the standard components, virtually any conceivable fitting is available as a special order item.

MATERIAL AVAILABLE

The Model ESW is available in AL29-4C or 316L, allowing the proper material selection for your specific application.

MATERIAL THICKNESS

LINER MATERIALS AL29-4C OR 316L	
Diameter	Gauge
5" to 7"	20 GA
8" to 24"	24 GA
25" to 37"	20 GA
38" to 48"	18 GA



SUPPORT LIMITS

Support plates and wall supports are utilized to support the weight of the vent. In horizontal runs, supports should be placed adjacent to fittings not otherwise supported. See the individual part description for allowable support charts.

UNIQUE FEATURES

The eVent® Series offers unique features that no other vent manufacturer can provide:

DUALSEAL® WITH RAPIDLOCK® CONNECTION SYSTEM

- Factory-applied gasket designed specifically for exhaust systems
- Superior flange-to-flange joint connection
- Greater sealing surface than male/female gasket designs
- Quick install v-band
- One piece/hinged design
- No loose bolts/nuts to install

PRESSURE RATED AT 40" WC

- Reduces risk of leakage

LONGEST STRAIGHT SECTIONS UP TO 59"

- Reduces installation time/cost

GREATER DISTANCE BETWEEN SUPPORTS

- Reduces installation cost
- Solution to design challenges

UNION-MADE PRODUCT

3-YEAR LEAK FREE GUARANTEE

LIFETIME WARRANTY

SCHEBLER VALUE

FAST PROJECT COMPLETION

- Trouble-free installations/detailed instructions
- No on-site welding

MAXIMUM STRENGTH/LONG LIFE

- Unmatched dimensional accuracy for secure joint connections
- Fully welded liners and shells
- Unequaled support limits

COMPLETE SYSTEM DESIGN

- CAD drawings
- 3D design solutions
- Complete BOM
- System sizing

SPECIAL FITTINGS

- Customized components are available to meet the needs of your specific project

OPERATING TEMPERATURES AND CLEARANCES CHART

Model ESW has been tested and listed for a maximum flue gas temperature of 550°F, and ULC-S636-95 for gas vent-BH, Class I/Class II - 245°C. The clearances shown are from the shell to combustibles.

ESW CLEARANCE TO COMBUSTIBLES	
Section Inside Diameter	550°F (288°C)
5" - 8"	2" (51mm)
9" - 12"	3" (76mm)
13" - 16"	4" (102mm)
17" - 20"	5" (127mm)
21" - 24"	6" (152mm)
25" - 28"	7" (178mm)
29" - 32"	8" (203mm)
33" - 36"	9" (229mm)
37" - 40"	10" (254mm)
41" - 44"	11" (279mm)
45" - 48"	12" (305mm)

*Clearance to non-combustible materials for all diameters and applications is 0" (0mm).



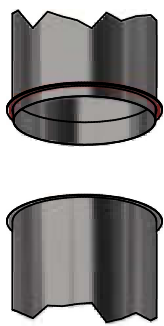
JOINT ASSEMBLY

Note: Wipe the inner bands and flanges clean prior to assembly.

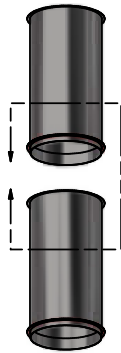
Note: Ensure factory supplied gasket is in place and in good clean condition. Damaged or missing gaskets should be replaced before flue is installed. Contact your Schebler distributor for additional gaskets.

Steps:

1. Align non-gasketed flange with gasketed/collared flange of the next section.
2. Join the ends of the two sections together, ensuring gasket is not pushed out of place.
3. Install inner band around the two flanges.
4. Rotate the flange bolt into the corresponding notch of the clip and use a 3/8" nut driver to tighten inner band around sections. Tap around the inner band with a rawhide mallet and retighten the flange bolts until they bottom out to ensure a tight joint.



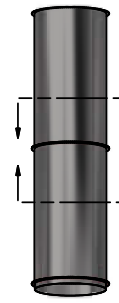
STEP 1 CLOSE



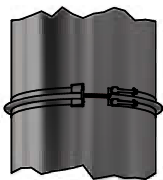
STEP 1



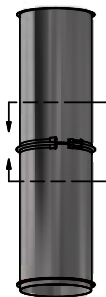
STEP 2 CLOSE



STEP 2



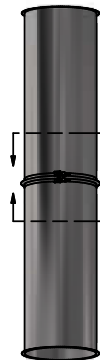
STEP 3 CLOSE



STEP 3



STEP 4 CLOSE



STEP 4

PART NUMBERS

All standard parts manufactured by Schebler are identified by a part number which describes their makeup and function.

The part numbers are made up as follows:

1. The first series is the model designation, EVD, ESW, EVP, EV2.
2. This is followed by the part name. For example, 47S, 90L or TS.
3. Next is the part's internal diameter in inches, such as 06, 12 or 24.
4. Last is the liner/shell material designation.

For example, the part number for an 8" ID, Model ESW, 47" long straight section with a AL29-4C stainless steel liner is ESW-47S-08T.

CODE	LINER / SHELL MATERIAL
E	316
T	AL29

SYSTEM COMPONENTS

CUSTOM DIMENSIONS ARE AVAILABLE TO SUIT YOUR NEEDS IN EVEN AND ODD SIZES.

ADAPTER KIT (FLANGED)

PART NO. BKF

The Adapter Kit (Flanged) is used for securing a pipe to a flanged appliance outlet. Beam clamps are provided for the connection of the flanges, or the flange can be drilled in the field to match the appliance.

Includes one inner band.

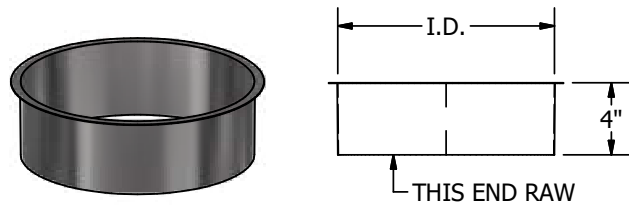


ADAPTER KIT (UNIVERSAL)

PART NO. UNAK3

The Universal Adapter Kit 3 is used for securing a pipe to an unflanged appliance outlet.

Includes one inner band.



PART NO. BKF	
I.D.	CLAMPS
6"	3
8"	4
10"	5
12"	6
14"	7
16"	8
18"	9
20"	10
22"	11
24"	12
26"	13
28"	14
30"	15
32"	16
34"	17
36"	18
38"	19
40"	20
42"	21
44"	22
46"	23
48"	24

Note: Most high efficiency, Category IV appliances have adapters that are specific to that make and model. Consult with your local Schebler distributor to verify your appliances needs.

SYSTEM COMPONENTS

CUSTOM DIMENSIONS ARE AVAILABLE TO SUIT YOUR NEEDS IN EVEN AND ODD SIZES.

STRAIGHT SECTION

PART NO. 11S, 23S, 47S AND 59S

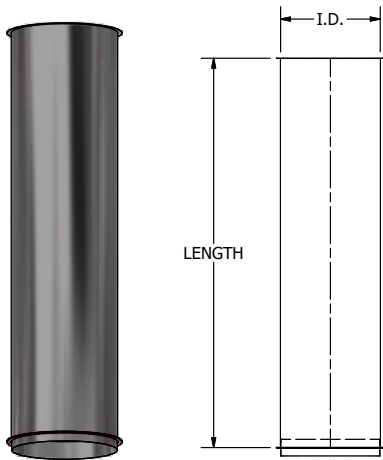
Standard lengths are as follows:

Diameters 5" to 24" are 11", 23", 47" and 59"

Diameters 25" to 48" are 11", 23" and 47"

Custom parts can be manufactured to any length over 3".

Includes one inner band.



VARIABLE LENGTH SECTION

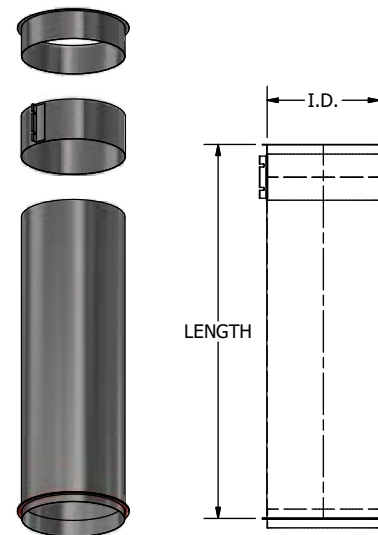
PART NO. 21VS AND 39VS

The Variable Section adjusts to provide a fixed odd length between two sections.

The minimum length is 7" and the maximums are 21" or 39".

This part does not provide for thermal expansion.

Includes one long and one short inner liner section with gaskets, one rectangular gasket and one securing collar.

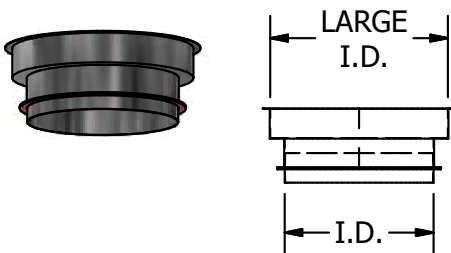


ABRUPT INCREASER

PART NO. AI

The Abrupt Increaser is used to connect two sections of different diameters in a shorter space than a tapered increaser.

Includes one inner band for both larger and smaller sizes.



SYSTEM COMPONENTS

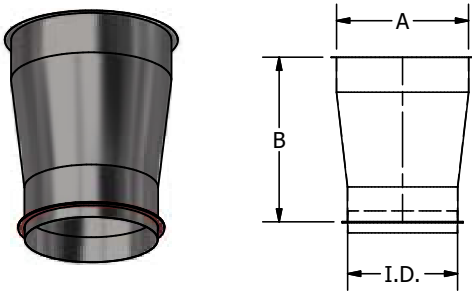
CUSTOM DIMENSIONS ARE AVAILABLE TO SUIT YOUR NEEDS IN EVEN AND ODD SIZES.

TAPERED INCREASER

PART NO. TI

The Tapered Increaser is used when a change in pipe diameter is required.

Includes one inner and one outer band of both smaller and larger sizes.

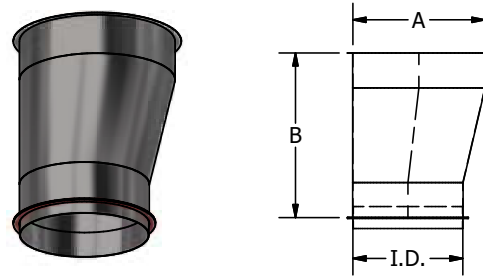


ECCENTRIC TAPERED INCREASER

PART NO. ETI

The Eccentric Tapered Increaser is used when a change in pipe diameter is required and maintains an eccentric profile when it is necessary for the pipe to be flat on one side.

Includes one inner and one outer band of both smaller and larger sizes.



PART NO. TI / ETI								
I.D.	A	B	A	B	A	B	A	B
6"	8"	15"	10"	18"	12"	21"	14"	24"
8"	10"	15"	12"	18"	14"	21"	16"	24"
10"	12"	15"	14"	18"	16"	21"	18"	24"
12"	14"	15"	16"	18"	18"	21"	20"	24"
14"	16"	15"	18"	18"	20"	21"	22"	24"
16"	18"	15"	20"	18"	22"	21"	24"	24"
18"	20"	15"	22"	18"	24"	21"	26"	24"
20"	22"	15"	24"	18"	26"	21"	28"	24"
22"	24"	15"	26"	18"	28"	21"	30"	24"
24"	26"	15"	28"	18"	30"	21"	32"	24"
26"	28"	15"	30"	18"	32"	21"	34"	24"
28"	30"	15"	32"	18"	34"	21"	36"	24"
30"	32"	15"	34"	18"	36"	21"	38"	24"
32"	34"	15"	36"	18"	38"	21"	40"	24"
34"	36"	15"	38"	18"	40"	21"	42"	24"
36"	38"	15"	40"	18"	42"	21"	44"	24"
38"	40"	15"	42"	18"	44"	21"	46"	24"
40"	42"	15"	44"	18"	46"	21"	48"	24"
42"	44"	15"	46"	18"	48"	21"	-	-
44"	46"	15"	48"	18"	-	-	-	-
46"	48"	15"	-	-	-	-	-	-
48"	-	-	-	-	-	-	-	-

Available in odd sizes. Call for odd diameter taper increaser information.

SYSTEM COMPONENTS

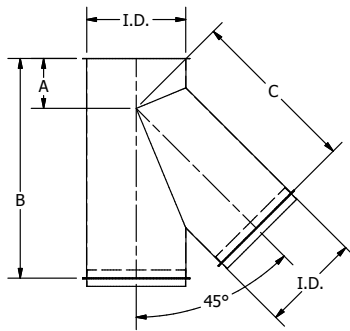
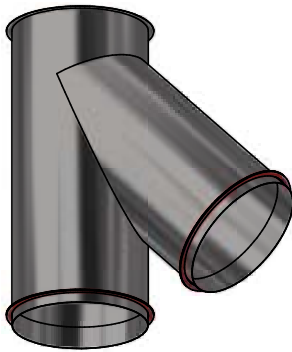
CUSTOM DIMENSIONS ARE AVAILABLE TO SUIT YOUR NEEDS IN EVEN AND ODD SIZES.

45° LATERAL TEE

PART NO. 45LT

The 45° Lateral Tee is used for low flow resistance entry into a stack or breeching.

Includes two inner bands.

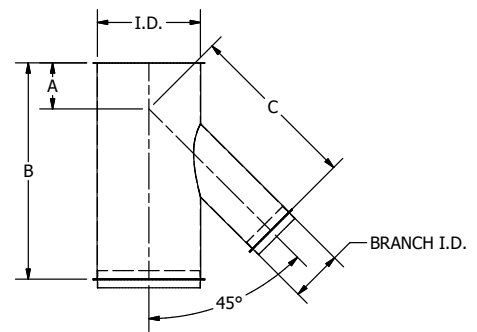
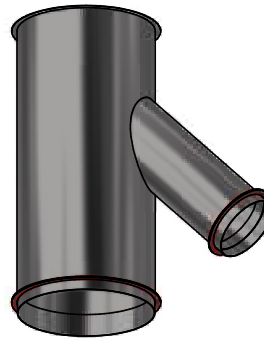


REDUCING 45° LATERAL TEE

PART NO. R45LT

The Reducing 45° Lateral Tee is used for low flow resistance entry into a stack or breeching when the stack or breeching is a larger size. Specify the size of the branch required.

Includes one each inner band for larger and smaller openings.



PART NO. 45LT / R45LT			
I.D.	A	B	A
6"	4 7/8"	18 3/8"	13 1/2"
8"	5 1/4"	21"	15 3/4"
10"	5 11/16"	23 7/8"	18 3/16"
12"	6 1/16"	26 11/16"	20 9/16"
14"	6 1/2"	29 1/2"	23"
16"	6 15/16"	32 5/16"	25 7/16"
18"	7 5/16"	35 3/16"	27 13/16"
20"	7 3/4"	38"	30 1/4"
22"	8 3/16"	40 13/16"	32 11/16"
24"	8 9/16"	43 5/8"	35 1/16"
26"	9"	46 1/2"	37 1/2"
28"	9 3/8"	49 5/16"	39 7/8"
30"	9 13/16"	52 1/8"	42 5/16"
32"	10 1/4"	54 15/16"	44 3/4"
34"	10 5/8"	57 13/16"	47 1/8"
36"	11 1/16"	60 5/8"	49 9/16"
38"	11 1/2"	63 7/16"	52"
40"	11 7/8"	66 1/4"	54 3/8"
42"	12 5/16"	69 1/8"	56 13/16"
44"	12 11/16"	71 15/16"	59 3/16"
46"	13 1/8"	74 3/4"	61 5/8"
48"	13 9/16"	77 9/16"	64 1/16"

SYSTEM COMPONENTS

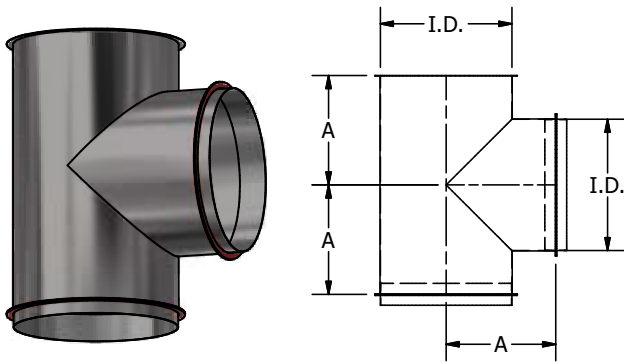
CUSTOM DIMENSIONS ARE AVAILABLE TO SUIT YOUR NEEDS IN EVEN AND ODD SIZES.

90° TEE

PART NO. 90T

The 90° Tee is used to join horizontal and vertical sections, as well as to provide for the connection of drain or inspection fittings. Use either the drain tee cap or the end cap for closure of the unused opening.

Includes two inner bands.



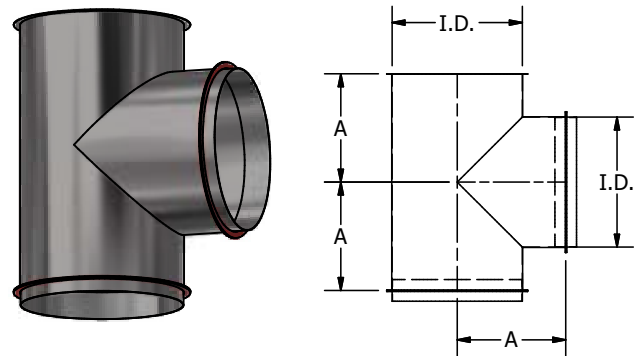
PART NO. 90T	
I.D.	A
6"	7"
8"	8"
10"	9"
12"	10"
14"	11"
16"	12"
18"	13"
20"	14"
22"	15"
24"	16"
26"	17"
28"	18"
30"	19"
32"	20"
34"	21"
36"	22"
38"	23"
40"	24"
42"	25"
44"	26"
46"	27"
48"	28"

REDUCING 90° TEE

PART NO. R90T

The Reducing 90° Tee is used to join horizontal and vertical sections of two different sizes, as well as to provide for the connection of drain or inspection fittings. Use either the drain tee cap or the end cap for closure of the unused opening. Specify size of the branch required.

Includes one inner band for larger and smaller openings.



PART NO. 90T			
MAIN I.D.	A	BRANCH I.D.	B
6"	6"	6"	12"
8"	7"	6"	14"
10"	8"	10"	16"
12"	9"	12"	18"
14"	10"	14"	20"
16"	11"	16"	22"
18"	12"	18"	24"
20"	13"	20"	26"
22"	14"	22"	28"
24"	15"	24"	30"
26"	16"	26"	32"
28"	17"	28"	34"
30"	18"	30"	36"
32"	19"	32"	38"
34"	20"	34"	40"
36"	21"	36"	42"
38"	22"	38"	44"
40"	23"	40"	46"
42"	24"	42"	48"
44"	25"	44"	50"
46"	26"	46"	52"
48"	27"		

SYSTEM COMPONENTS

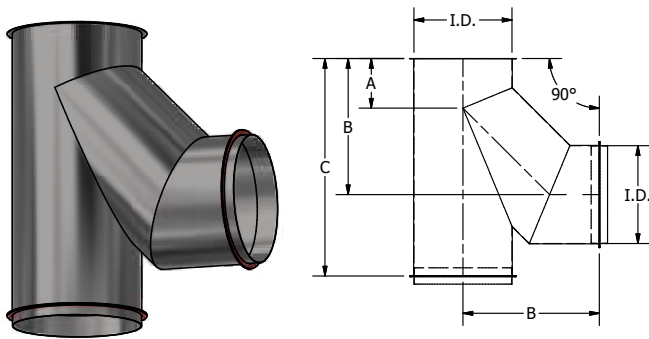
CUSTOM DIMENSIONS ARE AVAILABLE TO SUIT YOUR NEEDS IN EVEN AND ODD SIZES.

90° LATERAL TEE

PART NO. 90LT

The 90° Lateral Tee is used to join horizontal and vertical sections with lower resistance, as well as to provide for the connection of drain or inspection fittings. Use either the drain tee cap or the end cap for closure of the unused opening.

Includes two inner bands.



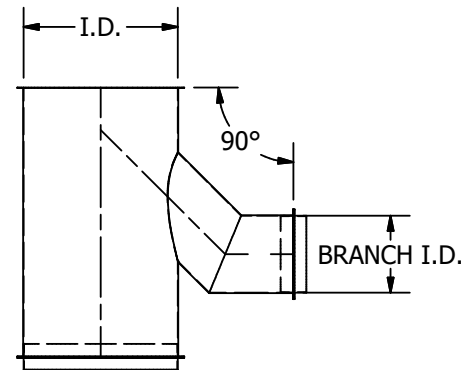
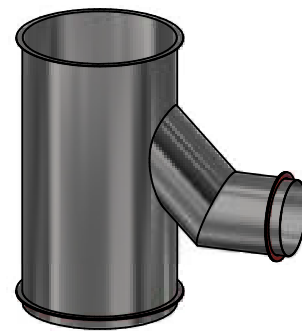
MODEL PA 90LT			
I.D.	A	B	C
6"	4 7/8"	11 3/16"	18 3/16"
8"	5 1/4"	13 1/16"	21"
10"	5 11/16"	14 7/8"	23 7/8"
12"	6 1/16"	16 11/16"	26 11/16"
14"	6 1/2"	18 1/2"	29 1/2"
16"	6 15/16"	20 3/8"	32 5/16"
18"	7 5/16"	22 3/16"	35 3/16"
20"	7 3/4"	24"	38"
22"	8 3/16"	25 13/16"	40 13/16"
24"	8 9/16"	27 11/16"	43 5/8"

REDUCING 90° LATERAL TEE

PART NO. R90LT

The Reducing 90° Lateral Tee is used to join horizontal and vertical sections of different sizes with lower resistance, as well as to provide for the connection of drain or inspection fittings. Use either the drain tee cap or the end cap for closure of the unused opening.

Includes one inner band for larger and smaller openings.



SYSTEM COMPONENTS

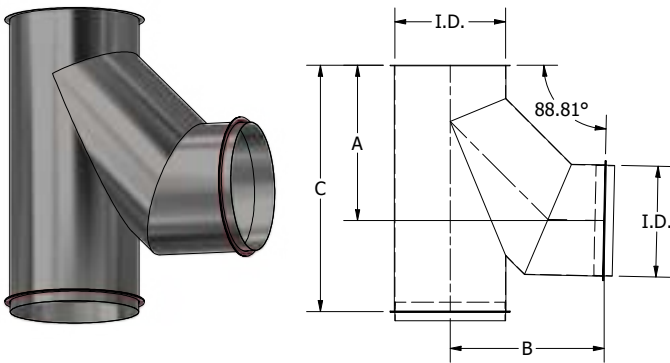
CUSTOM DIMENSIONS ARE AVAILABLE TO SUIT YOUR NEEDS IN EVEN AND ODD SIZES.

88.81° LATERAL TEE

PART NO. 88LT

The 88.81° Lateral Tee is used to join horizontal and vertical sections with lower resistance, as well as to provide for the connection of drain or inspection fittings. It is sloped down to allow components in the horizontal runs to adhere to industry standards for condensate removal. Use either the drain tee cap or the end cap for closure of the unused opening.

Includes two inner bands.



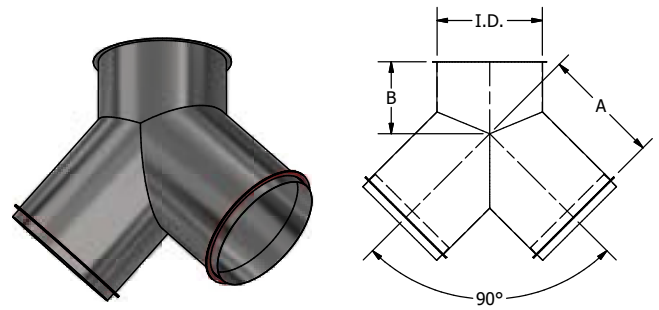
PART NO. 88LT			
I.D.	A	B	C
6"	11 5/16"	11 3/16"	18 3/16"
8"	13 1/8"	13 1/16"	21"
10"	15"	14 7/8"	23 7/8"
12"	16 13/16"	16 11/16"	26 11/16"
14"	18 11/16"	18 1/2"	29 1/2"
16"	20 1/2"	20 3/8"	32 5/16"
18"	22 5/16"	22 3/16"	35 3/16"
20"	24 3/16"	24"	38"
22"	26"	25 13/16"	40 13/16"
24"	27 13/16"	27 11/16"	43 5/8"

90° WYE

PART NO. 90Y

The 90° Wye is used for joining runs where low flow resistance is desired. All openings must be the same size. For connection to smaller diameter sections, use the tapered or abrupt increasers.

Includes two inner bands.



PART NO. 90Y		
I.D.	A	B
6"	10 1/2"	7"
8"	11 1/2"	7 13/32"
10"	12 1/2"	7 13/16"
12"	13 1/2"	8 7/32"
14"	14 1/2"	8 5/8"
16"	15 1/2"	9 1/16"
18"	16 1/2"	9 7/16"
20"	17 1/2"	9 7/8"
22"	18 1/2"	10 9/32"
24"	19 1/2"	10 23/32"
26"	20 1/2"	11 1/8"
28"	21 1/2"	11 17/32"
30"	22 1/2"	11 31/32"
32"	23 1/2"	12 3/8"
34"	24 1/2"	12 25/32"
36"	25 1/2"	13 3/16"
38"	26 1/2"	13 11/16"
40"	27 1/2"	14 1/32"
42"	28 1/2"	14 15/32"
44"	29 1/2"	14 27/32"
46"	30 1/2"	15 1/4"
48"	31 1/2"	15 11/16"

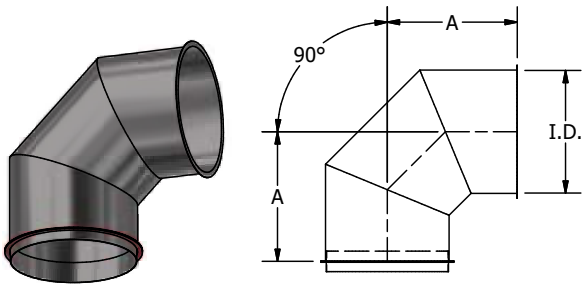
SYSTEM COMPONENTS

CUSTOM DIMENSIONS ARE AVAILABLE TO SUIT YOUR NEEDS IN EVEN AND ODD SIZES.

90° ELBOW PART NO. 90L

The 90° Elbow is used when making a 90° directional change. The 90° elbow is available in sizes 5" to 24". For a 90° directional change in diameters from 25" to 48", use two 45° elbows.

Includes one inner band.

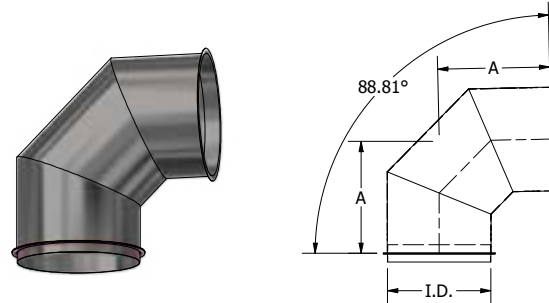


PART NO. 90L	
I.D.	A
6"	9 11/16"
8"	10 7/8"
10"	11 7/16"
12"	12 11/16"
14"	13 7/8"
16"	15 1/16"
18"	15 11/16"
20"	16 7/8"
22"	17 1/2"
24"	18 11/16"

88° ELBOW PART NO. 88L

The 88° Elbow is used with the 2° Elbow to create the correct pitch to allow for condensate to flow to a stack drain.

Includes one inner band.



PART NO. 88L	
I.D.	A
6"	10"
8"	11"
10"	12"
12"	13"
14"	14"
16"	15"
18"	16"
20"	17"
22"	18"
24"	19"
26"	20"
28"	21"
30"	22"
32"	23"
34"	24"
36"	25"
38"	26"
40"	27"
42"	28"
44"	29"
46"	30"
48"	31"

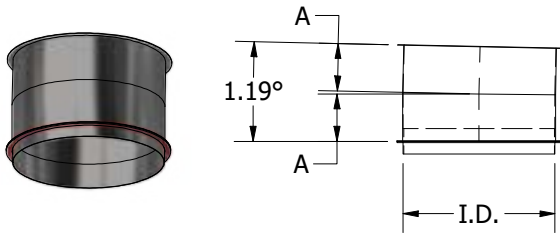
SYSTEM COMPONENTS

CUSTOM DIMENSIONS ARE AVAILABLE TO SUIT YOUR NEEDS IN EVEN AND ODD SIZES.

2° ELBOW PART NO. 02L

The 2° Elbow is used with the 88° Elbow to create the correct pitch to allow for condensate to flow to a stack drain.

Includes one inner and one outer band.

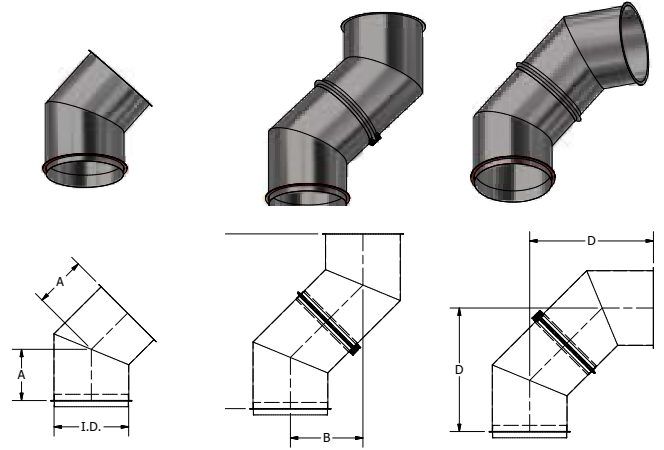


PART NO. 02L	
I.D.	A
6"	3 3/4"
8"	3 3/4"
10"	3 3/4"
12"	3 3/4"
14"	3 3/4"
16"	3 13/16"
18"	3 13/16"
20"	3 13/16"
22"	3 13/16"
24"	3 13/16"
26"	3 13/16"
28"	3 13/16"
30"	3 7/8"
32"	3 7/8"
34"	3 7/8"
36"	3 7/8"
38"	3 7/8"
40"	3 7/8"
42"	3 15/16"
44"	3 15/16"
46"	3 15/16"
48"	3 15/16"

45° ELBOW PART NO. 45L

The 45° Elbow is used when a vertical or horizontal direction change of 45° is desired.

Includes one inner band.



PART NO. 45L				
I.D.	A	B	C	D
6"	7"	9 29/32"	23 29/32"	16 29/32"
8"	7 3/8"	10 7/16"	25 3/16"	17 13/16"
10"	7 13/16"	11 3/64"	26 43/64"	18 55/64"
12"	8 1/4"	11 43/64"	28 11/64"	19 59/64"
14"	8 5/8"	12 13/64"	29 29/64"	20 53/64"
16"	9 1/16"	12 13/16"	30 15/16"	21 7/8"
18"	9 1/2"	13 7/16"	32 7/16"	22 15/16"
20"	9 7/8"	13 31/32"	33 23/32"	23 27/32"
22"	10 5/16"	14 37/64"	35 13/64"	24 57/64"
24"	10 3/4"	15 13/64"	36 45/64"	25 61/64"
26"	11 1/8"	15 47/64"	37 63/64"	26 55/64"
28"	11 9/16"	16 23/64"	39 31/64"	27 59/64"
30"	11 15/16"	16 7/8"	40 3/4"	28 13/16"
32"	12 3/8"	17 1/2"	42 1/4"	29 7/8"
34"	12 3/4"	18 1/32"	43 17/32"	30 25/32"
36"	13 3/16"	18 21/32"	45 1/32"	31 27/32"
38"	13 5/8"	19 17/64"	46 33/64"	32 57/64"
40"	14"	19 51/64"	47 51/64"	33 51/64"
42"	14 7/16"	20 27/64"	49 19/64"	34 55/64"
44"	14 7/8"	21 1/32"	50 25/32"	35 29/64"
46"	15 1/4"	21 9/16"	52 1/16"	36 13/16"
48"	15 11/16"	22 3/16"	53 9/16"	37 7/8"

SYSTEM COMPONENTS

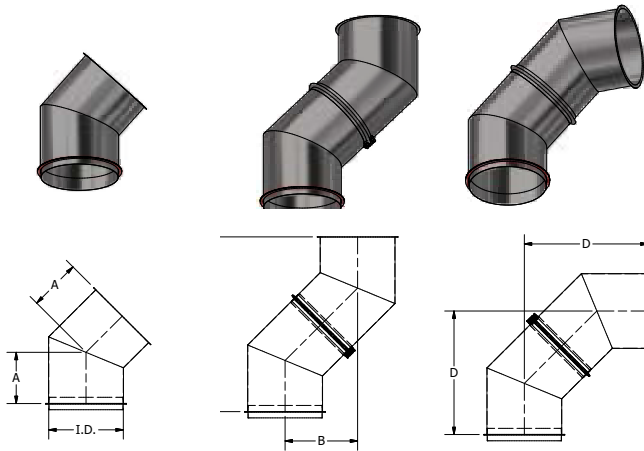
CUSTOM DIMENSIONS ARE AVAILABLE TO SUIT YOUR NEEDS IN EVEN AND ODD SIZES.

30° ELBOW

PART NO. 30L

The 30° Elbow is used when a vertical or horizontal direction change of 30° is desired.

Includes one inner band.



PART NO. 30L

I.D.	A	B	C	D
6"	6 1/8"	6 1/8"	22 55/64"	13 13/64"
8"	6 3/8"	6 3/8"	23 51/64"	13 47/64"
10"	6 5/8"	6 5/8"	24 23/32"	14 9/32"
12"	6 15/16"	6 15/16"	25 57/64"	14 61/64"
14"	7 3/16"	7 3/16"	26 53/64"	15 31/64"
16"	7 7/16"	7 7/16"	27 3/4"	16 1/32"
18"	7 3/4"	7 3/4"	28 59/64"	16 45/64"
20"	8"	8"	29 55/64"	17 15/64"
22"	8 1/4"	8 1/4"	30 51/64"	17 23/32"
24"	8 1/2"	8 1/2"	31 23/32"	18 5/16"
26"	8 3/4"	8 3/4"	32 21/32"	18 55/64"
28"	9 1/16"	9 1/16"	33 53/64"	19 17/32"
30"	9 5/16"	9 5/16"	34 3/4"	20 1/16"
32"	9 9/16"	9 9/16"	35 11/16"	20 39/64"
34"	9 7/8"	9 7/8"	36 55/64"	21 9/32"
36"	10 1/8"	10 1/8"	37 25/32"	21 13/16"
38"	10 3/8"	10 3/8"	38 23/32"	22 23/64"
40"	10 5/8"	10 5/8"	39 21/32"	22 57/64"
42"	10 15/16"	10 15/16"	40 13/16"	23 9/16"
44"	11 3/16"	11 3/16"	41 3/4"	24 7/64"
46"	11 1/2"	11 1/2"	42 59/64"	24 25/32"
48"	11 3/4"	11 3/4"	43 55/64"	25 5/16"

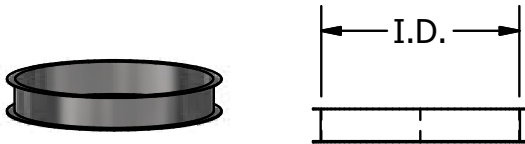
SYSTEM COMPONENTS

CUSTOM DIMENSIONS ARE AVAILABLE TO SUIT YOUR NEEDS IN EVEN AND ODD SIZES.

END CAP PART NO. EC

The End Cap is used to close an unused tee opening and to provide a means of accessing the interior of the system for inspection and cleaning.

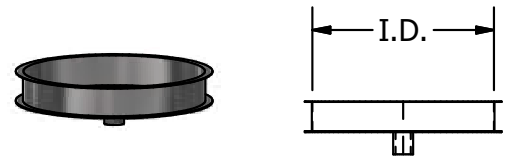
Includes one inner band.



DRAIN TEE CAP PART NO. DTC

The Drain Tee Cap is used to close an unused tee opening and to provide a drain at the base of a vertical chimney.

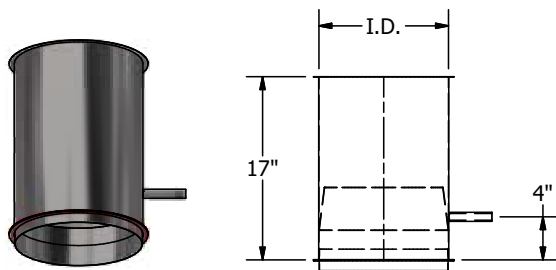
Includes one inner band.



DRAIN SECTION PART NO. DS

The Drain Section is used to drain rainwater and condensation from within the stack. The NPT nipple should be connected to a suitable drain.

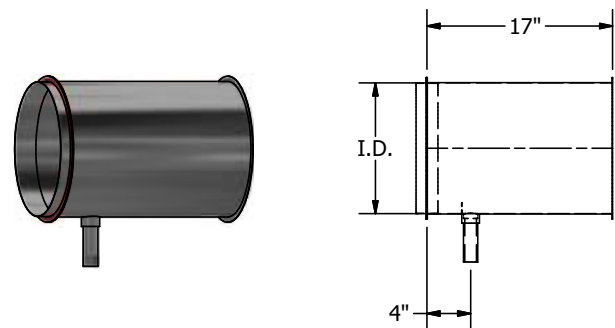
Includes one inner band.



HORIZONTAL DRAIN PART NO. HD

The Horizontal Drain is used to drain rainwater and condensation from within the stack. The NPT nipple should be connected to a suitable drain.

Includes one inner band.



SYSTEM COMPONENTS

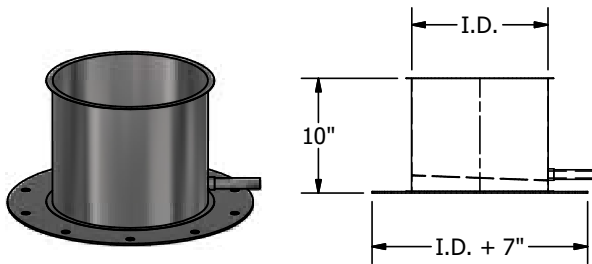
CUSTOM DIMENSIONS ARE AVAILABLE TO SUIT YOUR NEEDS IN EVEN AND ODD SIZES.

BASE DRAIN SECTION

PART NO. BD

The Base Drain Section provides a bottom closure and a drain attachment for base-supported chimneys.

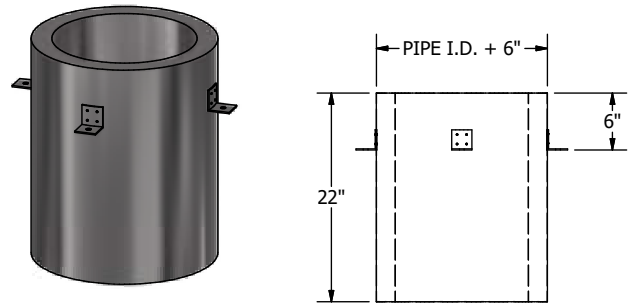
Includes one inner band.



INSULATED THIMBLE

PART NO. IT

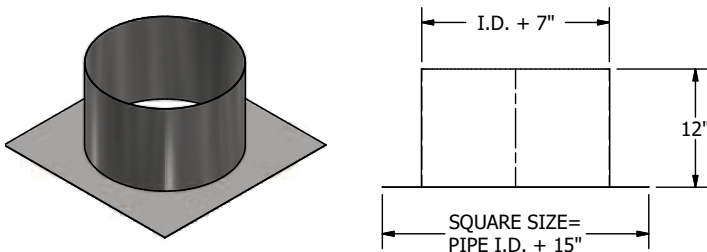
The Insulated Thimble is used when penetrating a combustible wall or roof. This part is designed for flat roofs. Custom-pitched thimbles are available upon request.



FLASHING

PART NO. FL

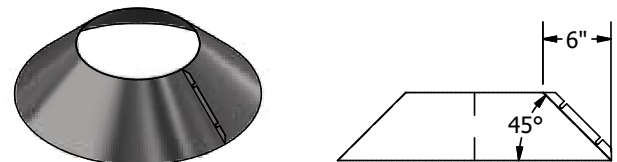
The Flashing is used in conjunction with the rain collar to seal roof penetrations. This part is designed for flat roofs. Custom-pitched flashings are available upon request.



RAIN COLLAR

PART NO. RC

The Rain Collar is used in conjunction with the flashing to seal roof penetrations.



SYSTEM COMPONENTS

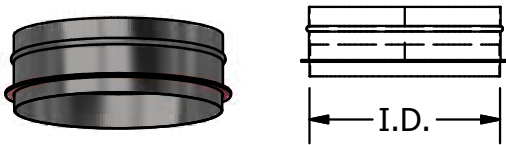
CUSTOM DIMENSIONS ARE AVAILABLE TO SUIT YOUR NEEDS IN EVEN AND ODD SIZES.

TOP SECTION

PART NO. TS

The Top Section is used when an open termination is required. A drain should be used at the base of the stack to drain off water that enters the system.

Includes one inner band.

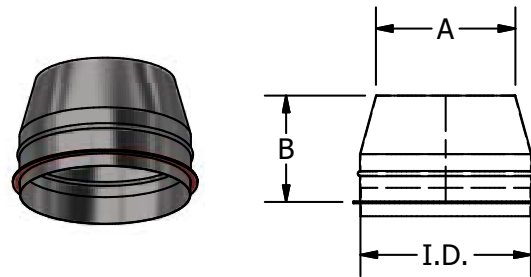


EXIT CONE

PART NO. EXC

The Exit Cone is used to increase the flue gas velocity exiting the stack. A drain should be used at the base of stacks to remove any water that enters the stack.

Includes one inner band.



PART NO. EXC		
I.D.	A	B
6"	4 7/8"	5 3/8"
8"	6 1/2"	6 1/8"
10"	8 1/8"	6 3/4"
12"	9 3/4"	7 1/2"
14"	11 3/8"	8 1/8"
16"	13 1/8"	8 7/8"
18"	14 3/4"	9 1/2"
20"	16 3/8"	10 1/4"
22"	18"	10 7/8"
24"	19 5/8"	11 5/8"
26"	21 1/4"	12 1/4"
28"	22 7/8"	13"
30"	24 1/2"	13 5/8"
32"	26 1/8"	14 3/8"
34"	27 3/4"	15"
36"	29 3/8"	15 3/4"
38"	31"	16 3/8"
40"	32 5/8"	17 1/8"
42"	34 1/4"	17 3/4"
44"	35 7/8"	18 1/2"
46"	37 1/2"	19 1/8"
48"	39 1/4"	19 3/4"

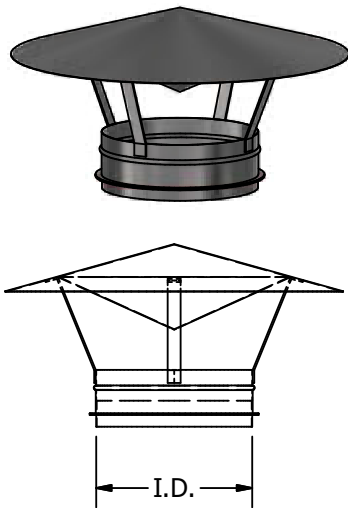
SYSTEM COMPONENTS

CUSTOM DIMENSIONS ARE AVAILABLE TO SUIT YOUR NEEDS IN EVEN AND ODD SIZES.

RAIN CAP PART NO. CC

The Rain Cap is used at stack terminations to prevent rainwater from entering the flue. A drain should be used at the base of stacks to drain off water that may be blown into the flue.

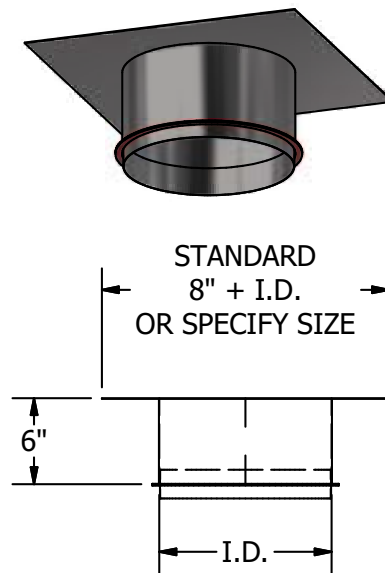
Includes one inner band.



FAN ADAPTER PART NO. FA

The Fan Adapter is used to attach a grease duct to an exhaust fan or kitchen hood.

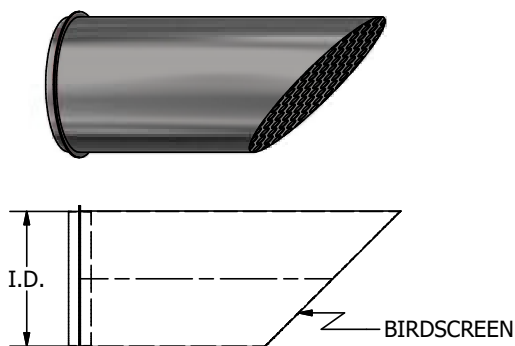
Includes one inner band.



HORIZONTAL TERMINATION PART NO. HT

The Horizontal Termination is used when the stack terminates in a horizontal position. Bird screen covers the opening to prevent any birds or rodents from entering.

Includes one inner band.



SYSTEM COMPONENTS

CUSTOM DIMENSIONS ARE AVAILABLE TO SUIT YOUR NEEDS IN EVEN AND ODD SIZES.

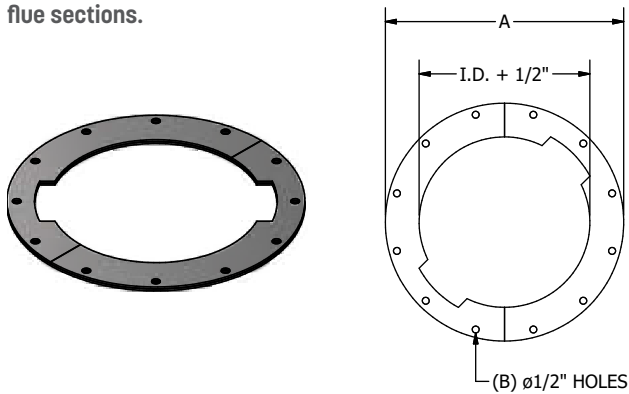
GUY SECTION

PART NO. GS

The Guy Section is to be used when the chimney extends beyond the vertical limits above the roof line. The guy section should be connected to guy wires or a rigid guying structure.

Includes one inner band and two half-outer bands.

Note: This part must be placed at the connection of two flue sections.



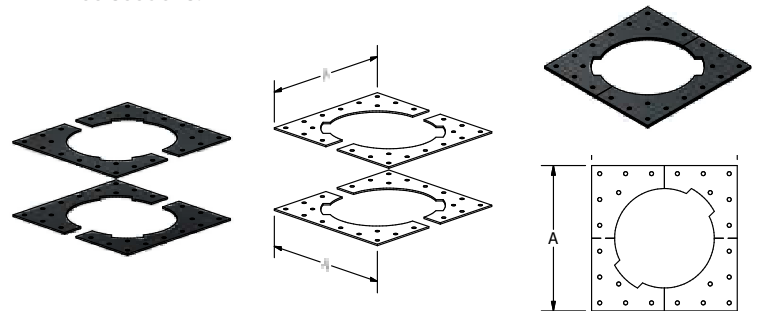
SUPPORT PLATE

PART NO. SP

The Support Plate is the primary load-carrying member of the chimney assembly. This part is designed to support (B) (see chart below) feet of vertical chimney section as well as provide fixed points in breaching runs.

Includes one inner band and two half-outer bands.

Note: This part must be placed at the connection of two flue sections.



PART NO. GS		
I.D.	A	B
6"	10 5/8"	8
8"	12 5/8"	8
10"	15 3/16"	12
12"	17 3/16"	12
14"	19 3/16"	12
16"	21 3/16"	12
18"	23 3/16"	12
20"	25 3/16"	12
22"	27 3/16"	12
24"	30 3/16"	12
26"	32 3/16"	12
28"	34 3/16"	16
30"	36 3/16"	16
32"	38 3/16"	16
34"	40 3/16"	16
36"	42 3/16"	20
38"	44 3/16"	20
40"	46 3/16"	20
42"	48 3/16"	20
44"	50 3/16"	24
46"	52 3/16"	24
48"	54 3/16"	28

PART NO. SP		
I.D.	A	B (FT)
6"	12"	403'
8"	14"	389'
10"	16"	375'
12"	18"	361'
14"	20"	347'
16"	22"	334'
18"	24"	320'
20"	26"	306'
22"	28"	292'
24"	30"	278'
26"	32"	264'
28"	34"	250'
30"	36"	236'
32"	38"	222'
34"	40"	208'
36"	42"	195'
38"	44"	181'
40"	46"	167'
42"	48"	153'
44"	50"	139'
46"	52"	125'
48"	54"	111'

SYSTEM COMPONENTS

CUSTOM DIMENSIONS ARE AVAILABLE TO SUIT YOUR NEEDS IN EVEN AND ODD SIZES.

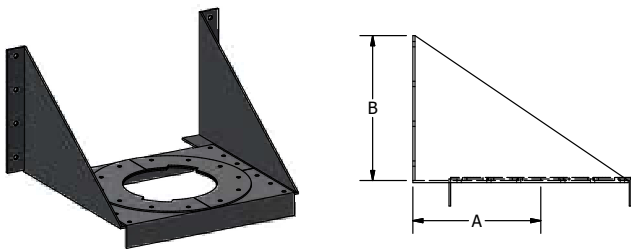
WALL SUPPORT

PART NO. WS

The Wall Support is used to provide vent support along a wall. The wall support will maintain the required clearance to combustible structures when properly installed and can support (C) (see chart below) feet of vertical venting.

Includes one inner band and two half-outer bands.

Note: This part must be placed at the connection of two flue sections.

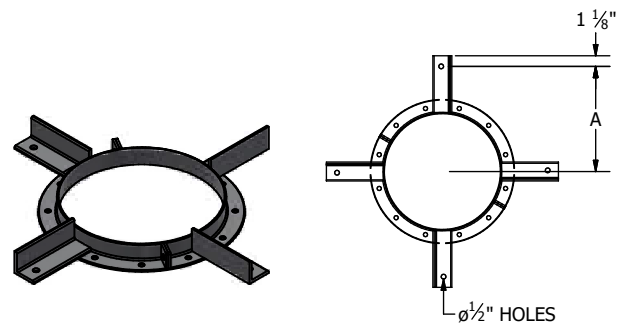


PART NO. WS			
I.D.	A	B	C (FT)
6"	11"	12 3/8"	193'
8"	13"	14 3/8"	171'
10"	14"	15 3/4"	164'
12"	15"	17 1/16"	153'
14"	17"	19 1/8"	148'
16"	18"	20 7/16"	140'
18"	20"	22 1/2"	134'
20"	21"	24 1/8"	129'
22"	23"	26 3/16"	123'
24"	24"	27 1/2"	119'
26"	26"	29 1/2"	113'
28"	27"	30 7/8"	108'
30"	29"	32 7/8"	103'
32"	30"	34 1/4"	120'
34"	32"	36 1/4"	114'
36"	33"	37 5/8"	88'
38"	35"	39 9/16"	81'
40"	36"	40 15/16"	77'
42"	38"	42 15/16"	73'
44"	39"	44 5/16"	68'
46"	44"	47"	64'
48"	45"	49 11/16"	60'

FLOOR/ROOF GUIDE

PART NO. FRG

The Floor/Roof Guide is used at the penetration of floors and roofs to guide the vent. This part is designed to absorb lateral loads only. It will not support vertical vent sections.



PART NO. FRG	
I.D.	A
6"	8 1/8"
8"	9 1/8"
10"	10 1/8"
12"	11 1/8"
14"	12 1/8"
16"	13 3/16"
18"	14 3/16"
20"	15 3/16"
22"	16 3/16"
24"	17 3/16"
26"	18 3/16"
28"	19 3/16"
30"	20 3/16"
32"	21 3/16"
34"	22 3/16"
36"	23 3/16"
38"	24 3/16"
40"	25 3/16"
42"	26 3/16"
44"	27 3/16"
46"	28 3/16"
48"	29 3/16"

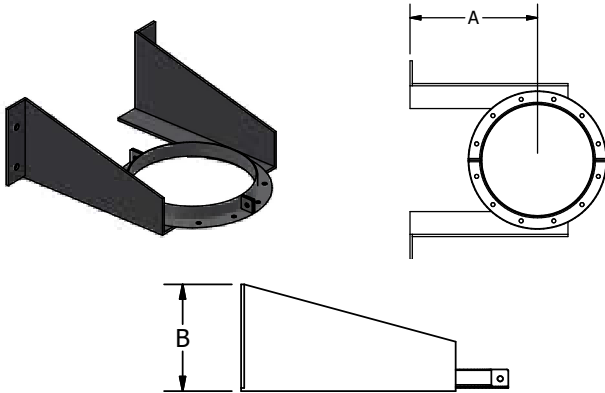
SYSTEM COMPONENTS

CUSTOM DIMENSIONS ARE AVAILABLE TO SUIT YOUR NEEDS IN EVEN AND ODD SIZES.

WALL GUIDE

PART NO. WG

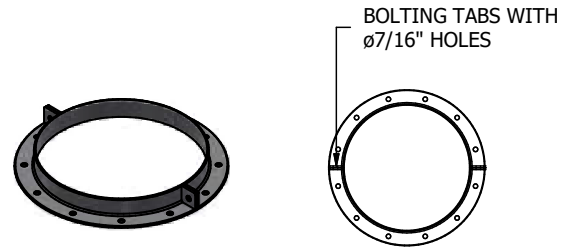
The Wall Guide is used to guide long vertical runs placed adjacent to walls. This part will maintain proper clearance to combustibles when properly installed.



FULL RING

PART NO. FR

The Full Ring is used to guide horizontal and vertical runs. The part is simply bolted around the outer shell, then rigidly connected to the building structure.

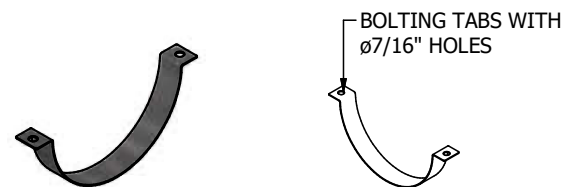


PART NO. WG		
I.D.	A	B
6"	11"	7 13/16"
8"	13"	8 1/2"
10"	14"	8 5/8"
12"	15"	9"
14"	17"	9 7/16"
16"	18"	9 3/4"
18"	20"	10 1/4"
20"	21"	10 9/16"
22"	23"	11 1/8"
24"	24"	11 5/16"
26"	26"	11 7/8"
28"	27"	12 1/8"
30"	29"	12 11/16"
32"	30"	12 15/16"
34"	32"	13 1/2"
36"	33"	13 11/16"
38"	35"	14 5/16"
40"	36"	14 1/2"
42"	38"	15 1/16"
44"	39"	15 5/16"
46"	44"	16 11/16"
48"	45"	16 7/8"

HANGER

PART NO. HG

The Hanger is used to support long horizontal runs, placed under the flue and then supported by rods connecting to the building structure.



SYSTEM COMPONENTS

CUSTOM DIMENSIONS ARE AVAILABLE TO SUIT YOUR NEEDS IN EVEN AND ODD SIZES.

eVent® ESW WEIGHT CHART

Part Description	Part No.	INSIDE DIAMETER (INCHES)																					
		6"	8"	10"	12"	14"	16"	18"	20"	22"	24"	26"	28"	30"	32"	34"	36"	38"	40"	42"	44"	46"	48"
11" Straight Section	11S	5 lbs	6	8	9	10	11	13	14	15	16	17	19	20	21	22	29	36	37	39	41	43	45
23" Straight Section	23S	12 lbs	15	18	22	25	28	31	34	38	41	44	47	51	54	58	74	91	95	100	105	109	114
30 Degree Elbow	30L	4 lbs	5	6	8	9	10	12	18	15	17	18	20	22	24	26	34	43	46	49	53	56	60
45 Degree Elbow	45L	5 lbs	6	7	9	10	12	14	16	18	20	22	25	27	30	32	43	54	58	63	68	72	77
45 Degree Lateral Tee	45LT	9 lbs	13	17	22	27	32	38	44	51	59	67	75	84	93	103	142	173	194	211	229	247	266
47" Straight Section	47S	12 lbs	15	18	22	25	28	31	34	38	41	44	47	51	54	58	74	91	95	100	105	109	114
59" Straight Section	59S	10 lbs	19	23	26	30	34	38	42	46	50	-	-	-	-	-	-	-	-	-	-	-	-
90 Degree Elbow	90L	6 lbs	9	12	15	19	23	28	33	38	44	-	-	-	-	-	-	-	-	-	-	-	-
90 Degree Tee	90T	15 lbs	10	13	16	19	22	26	30	34	39	44	49	54	59	65	86	111	120	130	140	151	161
90 Degree Lateral Tee	90LT	15 lbs	10	13	16	19	22	26	30	34	39	44	49	54	59	65	86	111	120	130	140	151	161
90 Degree Wye	90Y	13 lbs	9	11	14	17	20	23	26	30	34	38	42	47	54	57	76	96	104	113	121	130	139
Abrupt Increaser	AI	7 lbs	4	5	6	7	8	8	9	10	11	12	12	13	14	15	16	20	21	22	23	24	25
Base Drain	BD	12 lbs	8	9	10	12	13	14	16	17	19	20	21	23	24	26	30	36	38	40	42	44	45
Boiler Kit Flanged	BKF	7 lbs	4	5	6	7	8	8	9	10	11	12	12	13	14	15	16	20	21	22	23	24	25
Boiler Kit Raw	BKR	4 lbs	3	3	4	4	4	5	5	6	6	7	7	8	8	8	9	13	13	14	15	15	16
Drain Section	DS	11 lbs	7	9	10	12	13	15	16	18	19	20	22	23	25	26	33	42	44	46	48	50	54
Drain Tee Cap	DTC	5 lbs	3	4	4	5	6	6	7	8	9	10	11	13	14	15	20	26	28	30	32	35	37
End Cap	EC	4 lbs	3	3	4	4	5	6	7	8	9	10	11	12	13	15	19	25	27	29	32	34	37
Fan Adapter	FA	7 lbs	4	5	6	7	8	8	9	10	11	12	12	13	14	15	16	20	21	22	23	24	25
Flashing	FL	11 lbs	6	7	8	8	9	10	11	11	12	13	14	15	15	16	17	18	19	20	20	21	22
Floor/Roof Guide	FRG	10 lbs	5	6	6	8	8	9	9	10	12	13	14	14	15	15	16	17	17	18	18	19	20
Full Ring	FR	2 lbs	2	3	3	5	5	6	6	7	9	10	11	11	12	12	13	14	14	15	15	16	17
Guy Section	GS	5 lbs	6	7	7	8	9	10	11	12	13	14	15	16	16	17	18	21	22	23	24	25	26
Hanger	HG	1 lb	1	2	2	3	3	3	3	4	5	5	6	6	6	6	7	7	7	8	8	8	9
Horizontal Drain	HD	6 lbs	7	9	10	12	13	15	16	18	19	20	22	23	25	26	33	42	44	46	48	50	52
Insulated Thimble	IT	10 lbs	11	13	14	16	17	18	20	21	22	24	25	26	28	29	31	32	33	35	36	37	39
Rain Cap	CC	10 lbs	6	7	8	9	11	12	14	16	17	19	22	23	26	29	33	37	40	43	46	50	53
Rain Collar	RC	2 lbs	3	3	3	3	4	4	4	4	5	5	5	5	6	6	6	6	7	7	7	7	8
Support Plate	SP	16 lbs	18	21	24	27	29	32	35	38	50	54	57	61	65	69	73	93	98	103	109	114	119
Tapered Increaser	TI	7 lbs	8	10	12	14	15	17	19	20	22	24	25	27	29	31	39	49	51	53	56	108	111
Top Section	TS	2 lbs	2	3	3	3	4	4	5	5	5	6	6	6	7	7	9	11	11	12	12	13	13
Variable Section	VS	12 lbs	15	18	22	25	28	31	34	38	41	44	47	51	58	67	74	91	95	100	105	109	114
Reducing 90 Degree Tee	R90T	15 lbs	10	13	16	19	22	26	30	34	39	44	49	54	59	65	86	111	120	130	140	151	161
Reducing 45 Degree Tee	R45LT	17 lbs	12	16	19	21	24	29	32	37	41	46	52	57	61	67	90	115	125	136	146	157	169
Wall Guide	WG	7 lbs	9	10	11	13	14	16	17	18	22	24	25	27	29	30	31	33	35	37	38	43	44
Wall Support	WS	26 lbs	31	37	42	49	54	62	69	78	93	103	111	122	131	143	152	180	191	208	220	239	251

All weights shown above are actual weights; for shipping weights, multiply by 1.25

SAMPLE SPECIFICATION

MODEL ESW

The factory-built modular vent shall be laboratory tested and listed in accordance with Underwriters Laboratories Standard UL 1738 for use with category II, III and IV appliances with a maximum flue gas temperature of 550°F and ULC-S636-95 for gas vent – BH, Class I/ Class II 245°C.

Product must have UL pressure rating of 40" WC. Product to have leak-free guarantee for three (3) years and lifetime product warranty backed by the manufacturer. Vent sections shall be sealed with 1/2" banded flanges and factory applied gasket for temperatures up to 600°F with a UL tested pressure rating of 40" WC.

Inner shell material shall be type AL29-4C or 316L stainless steel. Inner shell thickness shall be 0.024" (24 GA). All inner shell seams shall be full penetration welded. Riveted, tacked or spot-welded seams are not permitted.

Breeching and vent sections, when installed according to the manufacturer's instructions, shall comply with national safety standards and building codes. Stacks terminating above a roof must terminate as required by code or NFPA 211.

SCHIEBLER

LIFETIME WARRANTY

The Schebler Company warrants eVent® model products installed in UL 1738 condensing applications against defects in material and workmanship for the entire duration the product is incorporated and used in its original installation when said product is properly installed per Schebler's design and current installation instructions or specifications, and is properly connected to a code compliant venting system for category IV appliances. This warranty is subject to all terms and conditions described in The Schebler Company's Standard Terms and Conditions of Sale.

The Schebler Company will, at its sole discretion, either repair or replace any defective product covered by this Limited Warranty at no charge, provided however Buyer shall be responsible for all costs of removal, shipping, and reinstallation of the product. Furthermore, this warranty does not apply to any system component not manufactured by Schebler Company and installed as part of the UL system. Repair or replacement of products provided under this Limited Warranty are similarly warranted for the remainder of the original warranty term.

This limited warranty is extended solely to the original owner subject to the satisfaction of the following conditions:

1. System sizing and design has been performed by Schebler personnel and the design parameters provided to The Schebler Company by the responsible engineer were and are accurately representative of the system operating conditions.
2. The undamaged components have been correctly installed in accordance with Schebler system design and sizing, and installation instructions published by The Schebler Company.
3. All horizontal breeching in the system is properly pitched back toward the appliances to allow condensate to flow to, and be removed by, horizontal drains, drain sections, drain tee caps and/or base drain sections.
4. The Schebler Company has supplied the entire vent system from connection to the appliance to the termination of the vent.
5. Any portion of the system exposed to the atmosphere has an outer shell constructed of stainless steel.

The Schebler Company makes no other warranty, whether expressed or implied. This warranty shall be the sole and exclusive remedy of any Buyer, whether in contract, tort or otherwise. UNDER NO CIRCUMSTANCES SHALL THE SCHEBLER COMPANY BE LIABLE FOR ANY INCIDENTAL OR CONSEQUENTIAL DAMAGE, OR COMMERCIAL LOSS OR FROM ANY OTHER LOSS OR DAMAGE EXCEPT AS SET FORTH HEREIN. The Schebler Company assumes no liability for any damages resulting in whole or part from misuse, improper installation, or inadequate maintenance of the system or component part thereof, nor assumes or authorizes any other person or entity to assume on its behalf any other liability in connection with the sale of its products.

Model ESW

SINGLE-WALL HIGH-EFFICIENCY VENTING FROM SCHEBLER

The eVent® Series is built for the unique and challenging requirements of high-efficiency appliances, including high temperatures and corrosive condensate. The series offers both single wall and double wall options.

All Schebler prefabricated chimney systems are known for the value they provide through unmatched dimensional accuracy and detailed draft calculations. These translate into faster project completion, lower installation costs and satisfied customers.

With Schebler, we are certain you will find what thousands of our customers have found: we exceed expectations by providing high-quality products and services through a culture of empowerment, continuous improvement and innovation. Since our founding in 1895, we have fabricated high-quality, innovative products designed and built with expert craftsmanship and backed by impeccable support. Contact Schebler for more information about our chimney solutions, including help with custom engineering and design solutions.

Made in America by a Team of Dedicated Employee-Owners
FIND YOUR LOCAL SCHEBLER CHIMNEY SYSTEMS DISTRIBUTOR



5665 Fenno Rd.
Bettendorf, IA 52722

563.359.0110

scheblerchimney.com